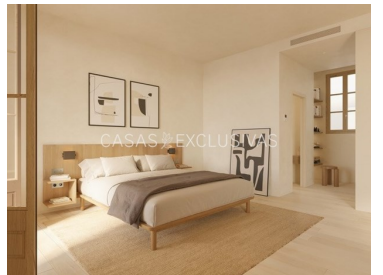
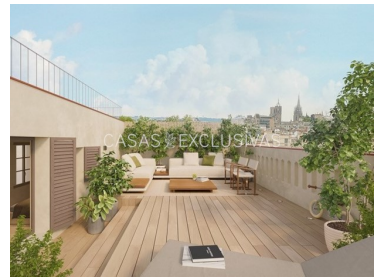




Barcelona - Penthouse



 3
Bedrooms

 2
Bathrooms

 139
Area (m²)

1 795 000 €
(EUR €)

Luxury Penthouse with Two Terraces in the Heart of Barcelona, El Born

Luxury Penthouse with Two Terraces in the Heart of Barcelona

Discover an exclusive lifestyle in this spectacular penthouse, fully renovated with the highest quality materials. Located in a listed 1889 building, directly across from the iconic Ciutadella Park, this home blends historical charm with contemporary comfort.

The property features three spacious bedrooms and two fully equipped bathrooms, carefully designed. The bright living room opens onto a wonderful terrace, perfect for enjoying the Mediterranean climate and creating unforgettable moments outdoors. Additionally, there is a second terrace with views of the Barcelona Cathedral and other modernist buildings in Ciutadella Park.

T +34 626089721 · E info@casas-exclusivas.com
Provenza 264 2º. 08008 Barcelona

¹ (Call to national fixed network) | ² (Call to national mobile network)



Situated on the fourth floor with excellent orientation, the penthouse enjoys natural light all day long. It is equipped with air conditioning, heating, and built-in wardrobes, ensuring maximum comfort and functionality. Access is provided by a panoramic elevator, installed during the building's comprehensive renovation just a decade ago.

The building is in perfect condition and reflects the splendor of Barcelona's golden era, thanks to the dedication of the previous owner, a descendant of the original construction family. The entrance hall has been recently updated with an elegant art déco chandelier and ambient LED lighting, adding a modern and sophisticated touch.

On the ground floor, you'll find a vibrant creative community, with a renowned marketing company. The area is surrounded by high-end interior design shops, a supermarket right across the street, and is just steps from the recently restored Winter Garden and the Born market.

The surroundings offer open and protected views, with the peace of mind that no new buildings will be constructed at the rear. Additionally, there are two nearby SABA parking options: one at the Born Market and another at Ciutadella Park.

A unique gem in one of Barcelona's most sought-after neighborhoods, where history and modernity go hand in hand.

General Conditions:

The information provided is based on third-party data and is offered for informational purposes only. It is presumed accurate, but the offer may be subject to inaccuracies, errors, unintentional omissions, price changes, and/or withdrawal from the market without prior notice. Taxes applicable to the transaction (such as ITP, VAT, AJD), as well as notary and property registration fees, are the responsibility of the buyer.

Property Features

- Air conditioning
- Terrace
- Walking distance to beach
- Quiet Location
- Proximity: Beach, Restaurants, Hospital, Pharmacy, Public Transport, Schools, Public Swimming Pools
- Lift
- Attic

T +34 626089721 · E info@casas-exclusivas.com

Provenza 264 2º. 08008 Barcelona

¹ (Call to national fixed network) | ² (Call to national mobile network)